

# Instructions

## Conical Lampshade Making Kits



### What is in the box:

- 1 x Stick-It self-adhesive panel
- 1 x Painted Duplex Ring (to fit Shade Carrier)
- 1 x Painted Metal Ring
- 1 x Roll of Double-Sided Tesa Tape
- 1 x Finishing Tool

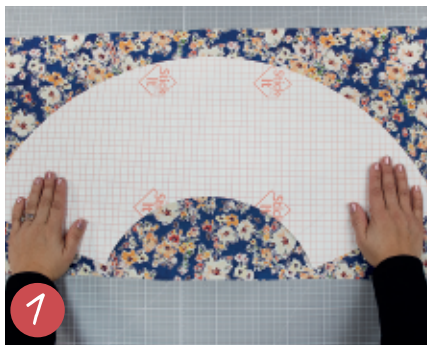
### Before you get started you will need:

- Covering of choice
- Clean flat working area
- Sharp Knife or Scissors
- Seam Roller (not essential)

**Important info:** Due to the curved shape of the conical lampshade, plain or non-directional all-over prints work best with this lampshade style. Linear patterns will not remain straight. To test your fabric, masking tape your panel seam together and wrap your fabric around in advance of adhering to the panel.



Scan to view the video tutorial



1

Cut down your covering to a workable size. Place face down and position the Stick-It panel on top.

**Tip** Iron your covering first to remove any creases.



2

When you're happy with placement peel back some of the release paper and stick down on your covering.

**Tip** Use a weight, such as a tin, to stop the panel from moving.



3

Smooth out from the middle and press the adhesive into the fabric firmly until all the release paper is removed. After you have inspected your panel for creases, the panel is now ready for trimming.

**Tip** If you feel a crease, peel back and try again.



4

Cut off surplus covering along the edges of the panel using scissors or a sharp knife.



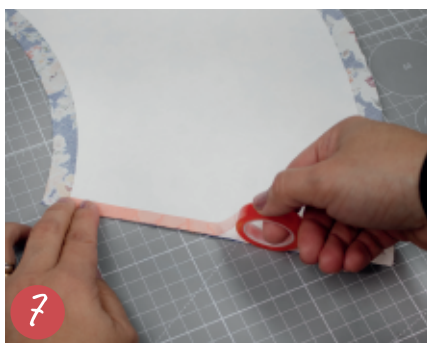
5

Gently snap back and break the creased edges (kiss-cut) around the panel.



6

Carefully, to avoid fraying, remove the broken strips of the panel to leave your covering's edge.



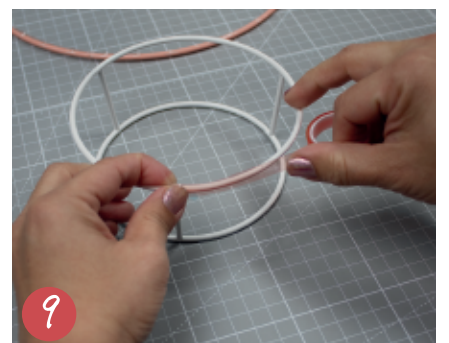
7

Apply double-sided Tesa tape to one side of the panel edge. This will be used to stick the seam.



8

Remove the release paper and your panel is now complete and ready for attaching to the rings.



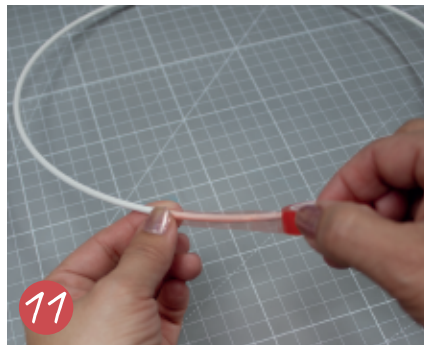
9

Apply double-sided Tesa tape to the larger ring of the duplex ring. Apply evenly to avoid creases.



10

Press the tape down evenly and firmly onto the ring then remove the release paper.



11

Repeat steps 9 & 10 for the final ring and you now have two sticky rings to fix to the panel.



12

Place the rings on the panel edge (not on your covering) and start to roll towards the seam edge (step 8).



13

Keep in line with the panel edge at all times. If you run out of line go back and correct. As the lampshade starts to take shape, it will be easier to keep in line.



14

Now turn the lampshade around so you can roll towards you, keeping in line with the edge.

*Tip* Keep the rings in contact with the panel edge. Don't press the rings down hard onto the panel, as this makes it more difficult for you to tuck the covering behind when finishing.



15

When you reach the seam (the overlap), press the tape together from the centre out. The seam is now closed. Do not apply any pressure here or you can dent the lampshade.



16

Place the lampshade with the seam on a hard surface and apply firm pressure, pressing the tape down.

*Tip* For best results use a seam roller.



17

Snip the covering in line with the struts on the utility ring so that the covering can be folded under the rings.



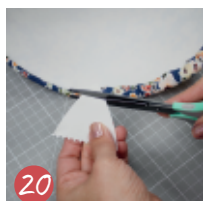
18

Pinch the fabric, pull taut and fold down onto the sticky rings.



19

Use the finishing tool to push the fabric behind the rings. Push the tool between the gap and swipe around the circumference until you're happy with the finish.



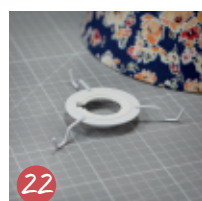
20

20. If the tool gets bent, cut with scissors to refresh.



21

21. Connect the lampshade to your table or floor lamp with a Shade Carrier.



22

22. Use a Spider fitting to connect to a pendant fitting.



Enjoy your professionally finished lampshade!